

DASHINE

ELECTRONICS

ENGINEERING SHOWCASE

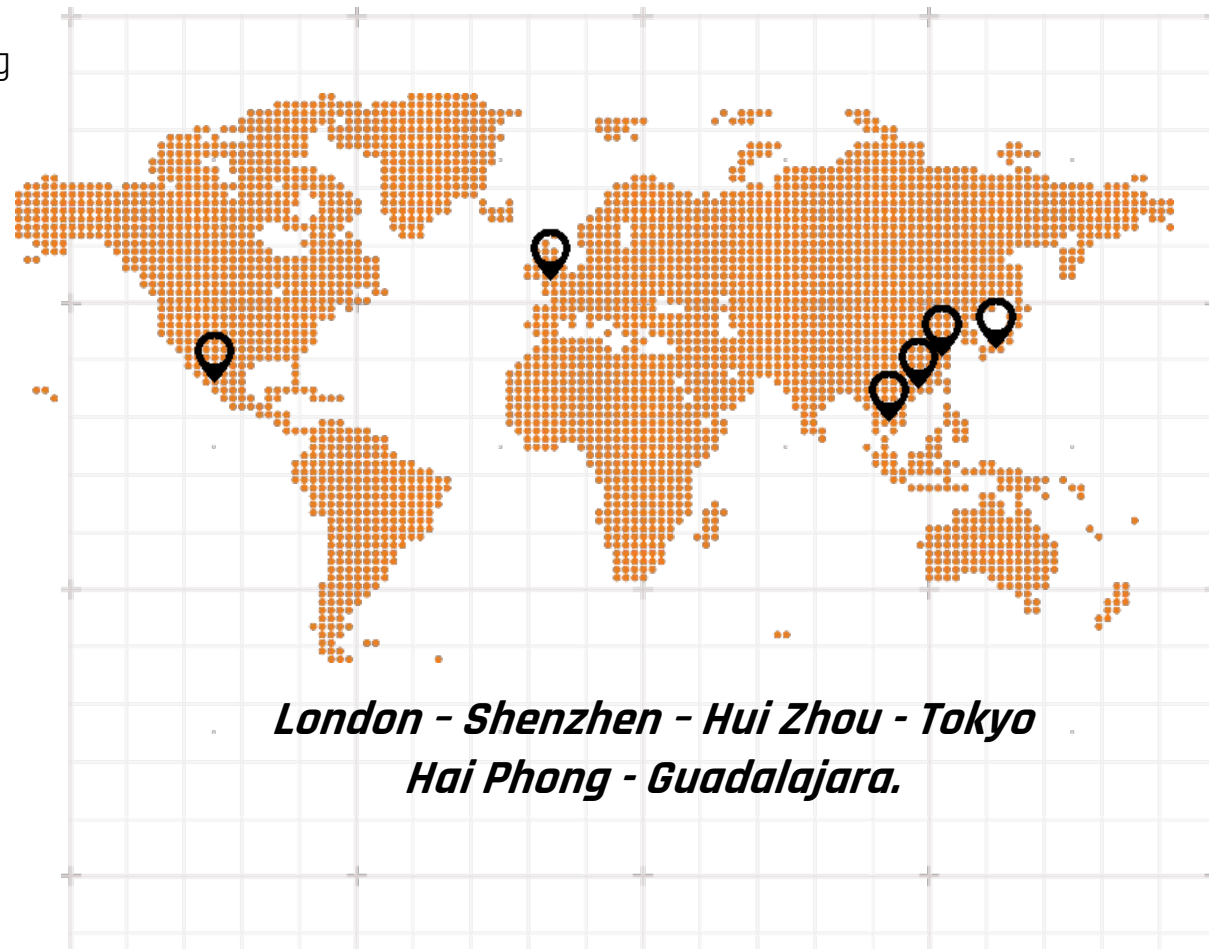
Comprehensive Engineering Services: From Prototype to Production.

We can help you by providing tailored engineering solutions to meet your businesses needs.

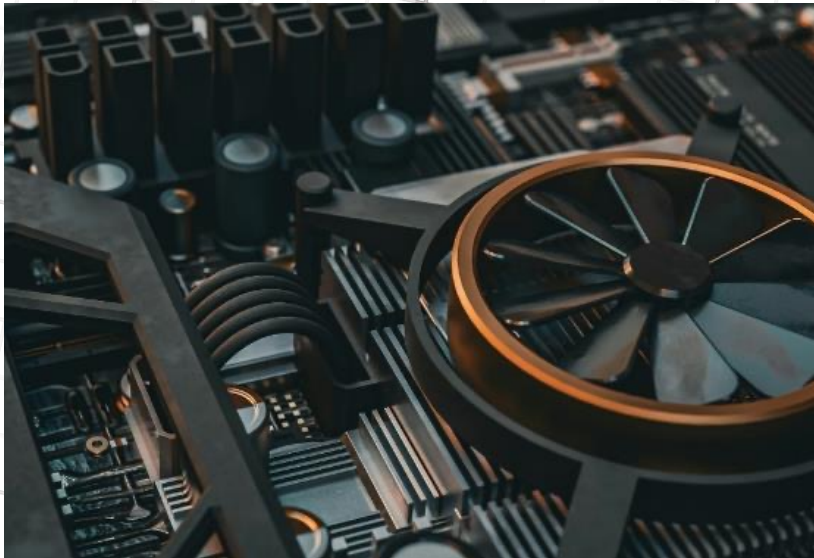
We are a leading designer, developer and manufacturer of HID and electronic products with a proven track record for major global brands.

Global presence with expert engineers in UK, China and Japan.

Whether you are an established business, or start-up we can help you at any stage of your project and assist you to launch a successful product.



***London - Shenzhen - Hui Zhou - Tokyo
Hai Phong - Guadalajara.***



Expert Team, Proven Capabilities.



Our international team consists of experienced engineers with diverse backgrounds in mechanical, electronics, firmware and software development.



Extensive experience developing consumer electronics products such as games controllers, simulation products, wearable devices, AI enabled peripherals and more.



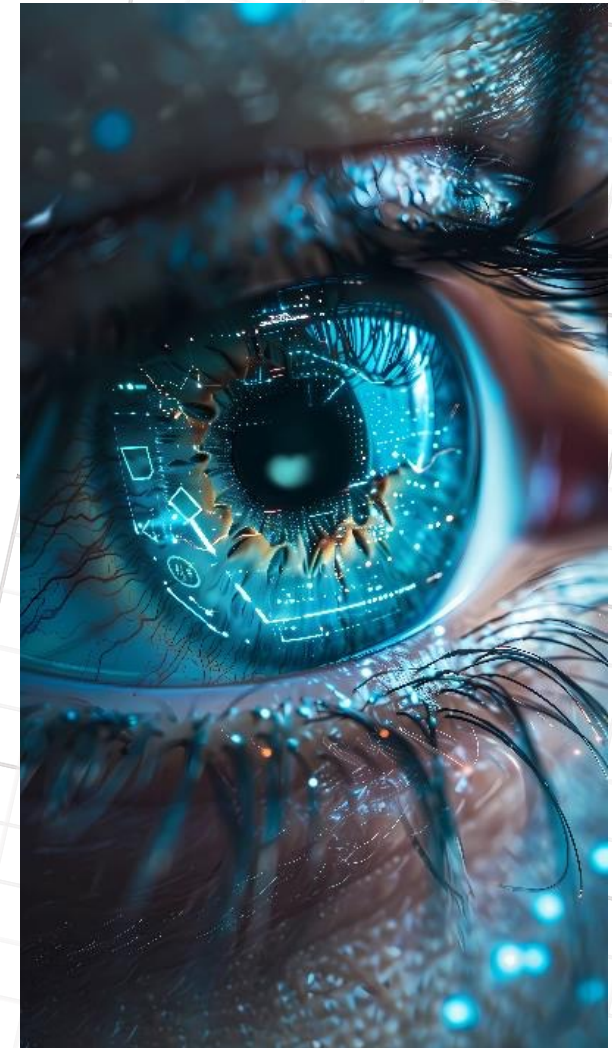
High-tech facilities in the UK and China allow rapid prototyping and testing to bring your product to market faster.

Our Engineering Capabilities.

We offer comprehensive, end to end engineering services across all disciplines

- **Design:** Concept creation, ideation, 3D and 2D CAD.
- **Mechanical design:** Rapid prototyping, FEA, DFM.
- **Electronics Design:** Component selection, schematic capture, PCB design, sensor interfacing, wireless communications, prototyping, validation and verification.
- **Firmware Development:** Embedded systems, real time OS, wireless communications, HiLS.
- **Testing and Validation:** Prototype validation, environmental testing, user testing, certifications, regulatory compliance.
- **Manufacturing Support:** Mass production scaling, prototype builds, in house SMT, quality control, packaging.
- **Software:** Hardware Integration, customisation, firmware upgrades, apps and drivers.

“We pride ourselves on delivering high quality engineering whether it is full product design or a single element of your project. Your project is our priority”



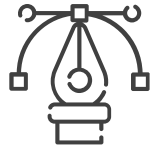
Our Approach to Product Development.

From concept to mass production, we provide end to end product development services that streamline the entire process



Concept and Requirements

We can help you develop your ideas into complete concepts and derive project requirements to guide the design process



Design & Prototyping

Our experienced engineers will take the requirements and produce a full product design including rapid prototypes



Testing & Validation

Our testing team will guide you through validations, user testing, life testing, environmental testing and certifications



Pre-production & Manufacturing Readiness

From DFM to tooling and then through EVT, DVT, and PVT we will enable you to develop the highest quality product



Mass Production Support

Our production engineers in our Shenzhen factory will ensure an efficient ramp up to mass production. Dedicated QC team to maintain product quality.



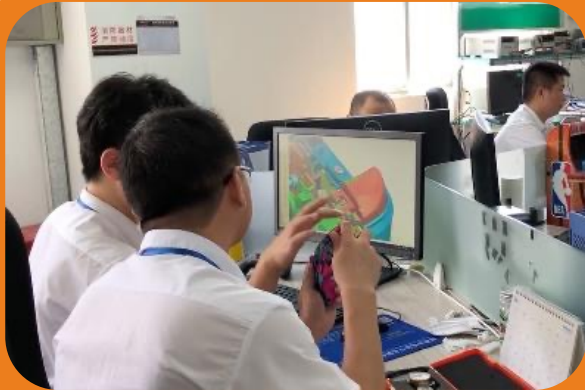
Sustaining

We can support your product throughout its life including firmware updates, cost down, incremental design changes and failure analysis.



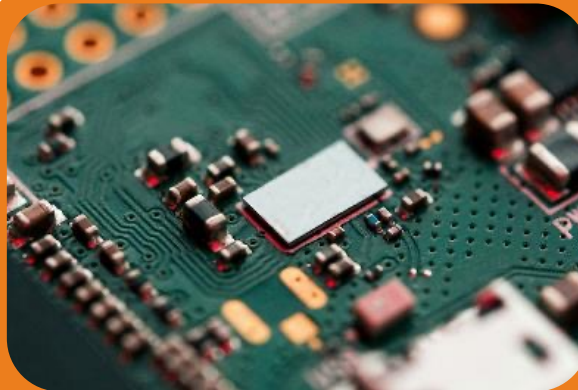
Flexible Engagement Models.

We tailor our solutions to meet your needs. Whether you need a complete solution or specific services, we can help



Full Product Development

- From concept to finished product
- We can provide a full engineering team to bring your concept to life
- Whether you are a startup or established business we can work with you to build your idea into a complete concept then guide you through the mass production process.



Modular Services

- Access any of our services as a standalone offering
- Whether you need a mechanical engineer for a DFM review or electronics engineer to complete a PCB layout - our team can help you
- We offer flexible solutions to meet your project demands.



Resource Augmentation

- Add additional experienced engineering resources to your team quickly
- If you require a dedicated resource to help across multiple tasks, we can provide an engineer who will integrate within your team
- Quickly and easily scale your team when needed to alleviate resource constraints.

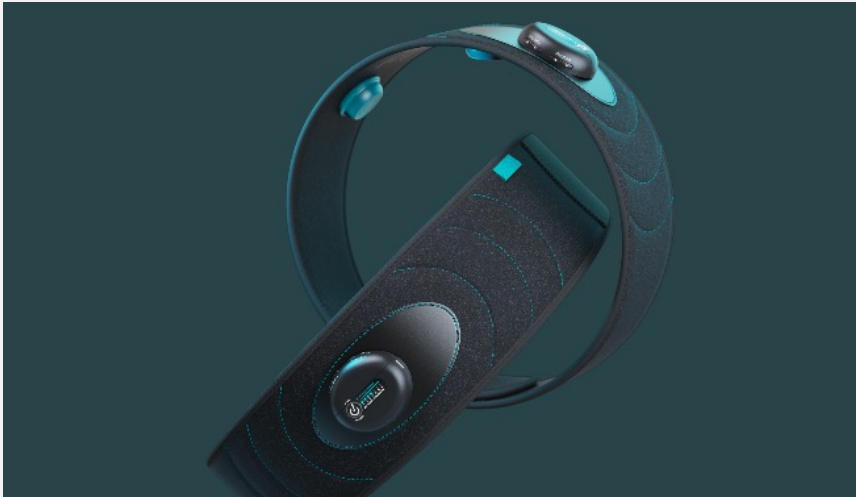
Our Recent Prototypes and Designs.

Product 1: Wellness Breathing Belt

The belt helps users to relax by guiding their breathing using 3 LRA (haptic motors) providing different sensations depending on the user settings.

We took the customers concept drawings and project requirements and completed the full mechanical and electrical design for the belt ensuring functionality, manufacturability and reliability.

We completed all stages on the route to mass production including full life testing, environmental testing, certifications and validations.



Product 2: Smart Shoe

The smart shoe is a sensor module which is integrated in a running shoe and provides analysis of a user's gait.

We were tasked with completing all engineering for this small company. We have successfully completed electronics, mechanics and firmware design producing a working sample and moving through to mass production.

Our engineering team reacted quickly to maintain the product schedule and worked as part of the customers team as the product was developed to meet the evolving requirements.



State of the Art Technology and Tools.

We use industry leading software and hardware for design, testing and prototyping and we constantly invest in the latest tools and technology.

Design: Maya, Keyshot, Rhino. Photoshop, Illustrator.

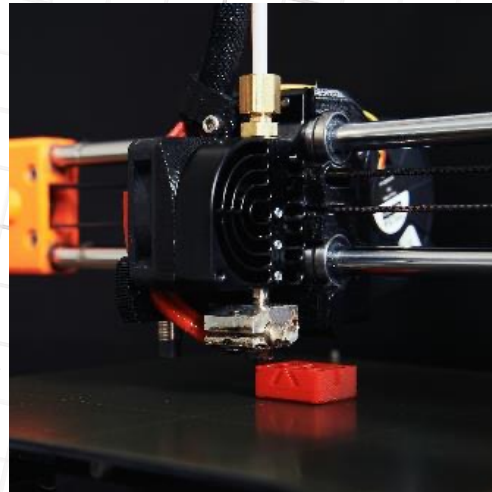
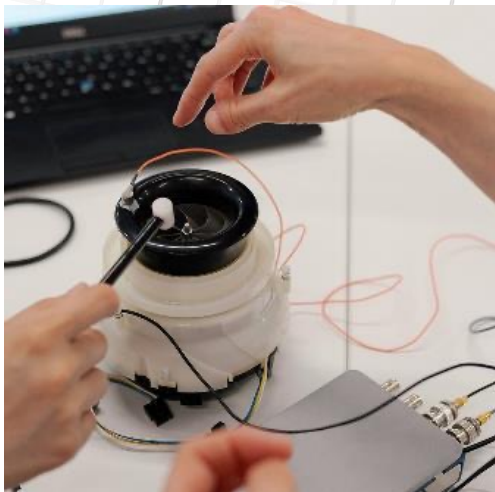
Mechanics: SolidWorks, 3D Printers, CNC machining.

Electronics: Altium, in house SMT, AOI, wire bonding, full prototype lab.

Firmware: Embedded C/C++, ARM Cortex, FreeRTOS, Zephyr, GIT, HiLS, automated build systems.

Software: C#, Java, Kotlin, Unity, Compose, Swift, L.A.M.P/W.A.M.P.

Testing: Environmental test chambers, shock machines, audio testing, ESD, oscilloscopes, network analysers, chemical analysis.



Why Choose Dashine?



Agility: we offer a personalised service, rapid response times and flexibility.



Expertise across disciplines: Our international team brings deep expertise across all engineering disciplines with a proven track record in product development.

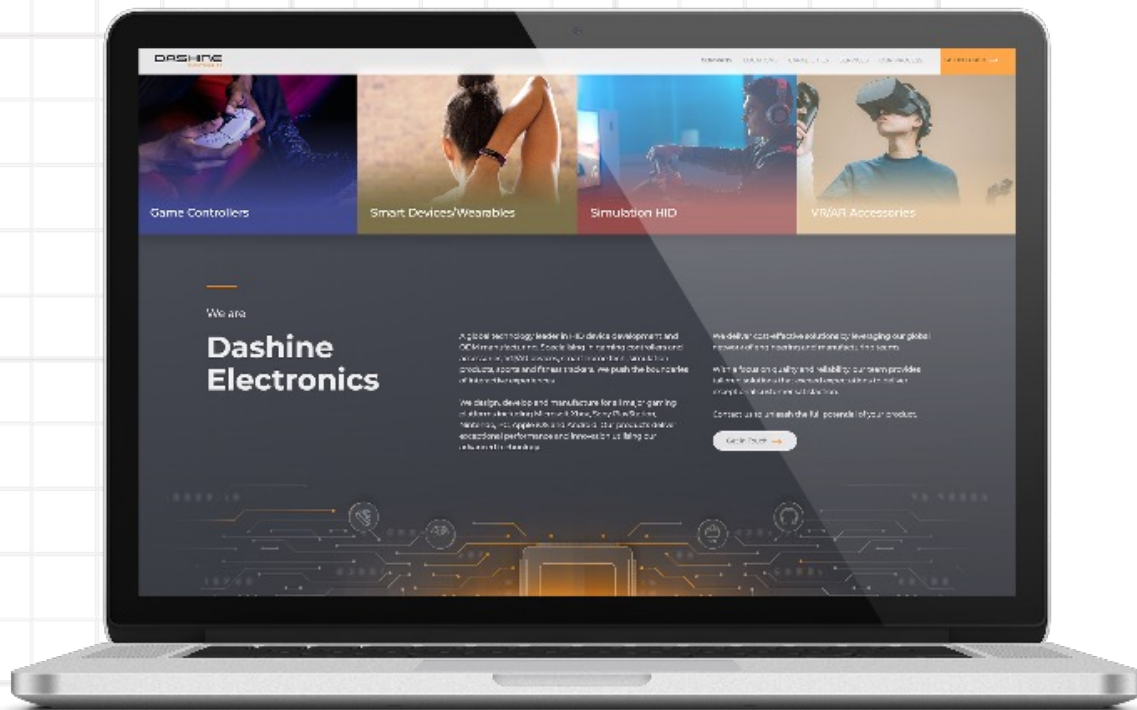


Innovative and Cost-Effective Solutions: using our extensive network we bring the latest technology to create innovative solutions at a price point suitable for you.



Commitment to quality: Our proven process and dedicated team ensure your needs are met to the highest standard possible.





Are you ready?

Let us help bring your vision to life.

Contact us today.



Email: sales@dashine.net
Website: www.dashine.net

We will arrange a follow up call to discuss your needs and how we can tailor our services to you.

Thank you, and we look forward to working with you!

With Compliments
 dashine.net